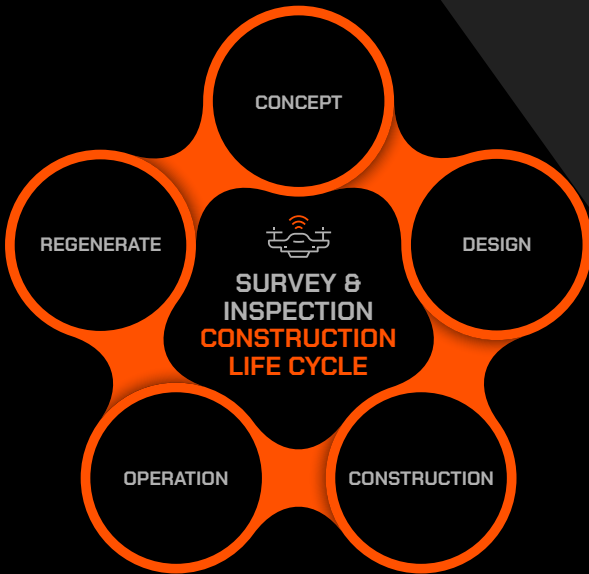




TEXO TALK

MARCH 2024





CONCEPT

DECODING THE LAND: UNLOCKING INFORMED DECISIONS FOR CONSTRUCTION SUCCESS

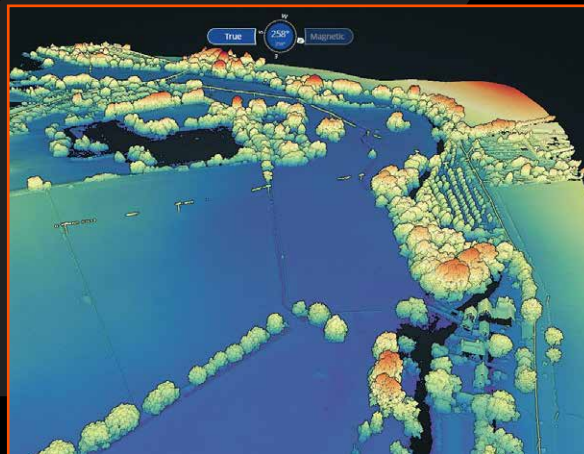
Geospatial information and intelligence is the cornerstone of strategic construction planning. Understanding a site's unique limitations and conditions, whether it's a greenfield site or existing structure, is crucial for making informed decisions. This understanding is used to assess the suitability of the site for desired future use or function.

Striking the right balance is key: gather comprehensive data while ensuring the granularity needed for insightful analysis. This data can range from existing maps and photographs to detailed surveys of land use, ownership, and specific areas of interest.

Our cutting-edge capture techniques include UAS photogrammetry and LiDAR, mobile mapping, terrestrial laser scanning, UAS and terrestrial inspection photography.

Deliverables tailored to your needs may include ordnance survey plans, statutory body information, ortho-photo-plans, digital elevation models, digital terrain models, layout plans or elevations of existing buildings; along with inspection imagery informing of the condition of existing assets.

Presenting comprehensive geospatial data for site assessment, enables informed analysis and considered decisions to be made, which ultimately sets a project on its first steps from concept to reality.



UAS LiDAR and photogrammetry survey of 100Hasite

DESIGN

TRANSFORMING DATA INTO DESIGN: FROM SITE ANALYSIS TO PROJECT BLUEPRINT

The design stage is where we translate the geospatial information gathered in the previous phase into a concrete plan. During this crucial stage, the level of detail, information density, and accuracy significantly increase. This can involve the extraction of additional information from the existing data asset or undertaking additional survey work on site.

Our capture techniques include UAS photogrammetry and LiDAR, mobile mapping, terrestrial laser scanning, EAS and terrestrial inspection photography. More focused topographical surveys and utility surveys by GNSS and total station along with higher accuracy measured surveys by 3D laser scanning can also be used.

Deliverables for this stage include topographic survey plans, 3D data sets and point clouds, 3D models and meshes, BIM/REVIT Models, utility surveys, detailed measured plans, elevations and cross-sections, and detailed inspection imagery informing of the condition of existing assets, including drainage CCTV footage and structural inspection using UAS.

By leveraging this enriched data, we can translate site analysis into a comprehensive design that forms the blueprint for construction projects.



Colour 3D mobile mapping and UAS capture of highway and roundabouts

CONSTRUCTION

BRIDGING DESIGN AND REALITY: THE CONSTRUCTION PHASE

The construction phase is the exciting stage where the design transforms from digital plans to a tangible reality. This involves precise execution and ongoing monitoring to ensure everything goes according to plan.

Structural and environment monitoring may be needed for works in progress, adjacent infrastructure and other buildings at crucial points of the build. Intermittent data capture is also completed to record progress and as-built information to inform any design adjustments.



Primary Site Control Establishment, Setting Out Services Including grid lines and piling locations, Vibration Monitoring, Structural Monitoring, Topographic Survey

Capture includes focused topographical surveys and as built surveys by GNSS, total station and 3D scanning. Clients may also request UAS photogrammetry and LiDAR of earth works, UAS and terrestrial inspection photography, structural monitoring by measurement and instrumentation, along with engineering and quality assurance surveys.

Deliverables from this phase may include setting out and monitoring reports, survey plans, 3D data sets and point clouds. 3D models and meshes, BIM/REVIT models, volumetrics, progression imagery and quality assurance reports.

By meticulously transferring design information, actively monitoring progress, and capturing crucial data, paves the way for a successful project completion.



Colour 3D mobile mapping and UAS capture of highway and roundabouts

OPERATION

BEYOND COMPLETION: KEEPING YOUR PROJECT THRIVING

Once construction wraps up, the story doesn't end. As-built plans, captured throughout or upon completion, become crucial operational documentation. These detailed plans depict the final, built state of the entire project, or specific elements as needed.

As the project enters its operational phase, maintenance needs and unforeseen challenges may arise. This is where intermittent surveys and inspections come into play. Their findings can inform repairs, replacements, or modifications to ensure the project's continued functionality and safety.

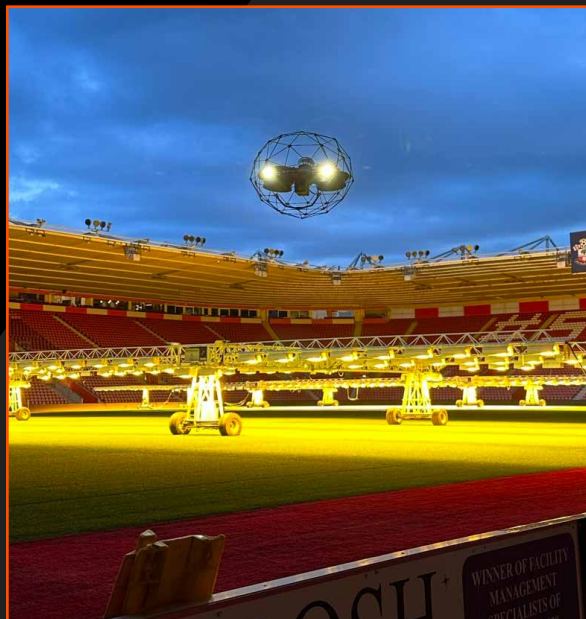


3D Scan Capture & LOD 300 Modelling of Academic Facility

Capture methods used at this stage include UAS and terrestrial inspection imagery, thermal surveys, confined space inspection and CCTV. Focused measured surveys by GNSS, total station and 3D scanning, and 3D data capture by UAS. Longer term structural and environmental, monitoring may also be needed.

Deliverables include inspection imagery and condition reporting. Thermal reports, monitoring reports, survey plans, 3D data sets and point clouds, 3D models and meshes, and BIM/REVIT models. All these will inform on the performance and changing operational nature of the completed project.

By utilising these tools and techniques beyond completion, we can ensure projects thrive throughout their operational life, maximising its value and longevity.



Complete internal & external stadium roof inspection using a range of drone platforms

REGENERATE

BREATHING NEW LIFE INTO EXISTING STRUCTURES

Construction isn't always about building new. The «end-of-life» phase of a construction life cycle focuses on reusing, refurbishing, or replacing existing structures. This involves carefully assessing the site's potential for a second life.

Options usually include renovation, retrofitting, adaption or demolition, depending on the site's condition and potential. Both condition assessment and spatial measurement contribute to these options. The technique and level of detail can be agreed based on the chosen outcome.

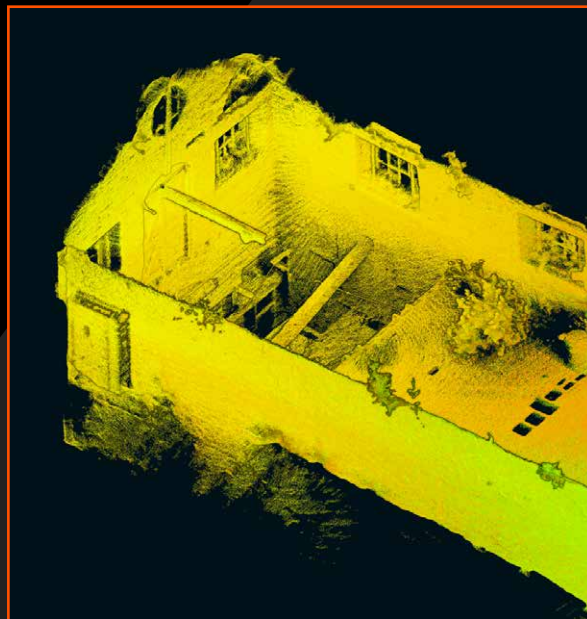


3D capture and modelling of industrial site

Tailored data capture includes UAS and terrestrial inspection imagery. Thermal surveys, confined space inspection and CCTV are useful, and topographic and measured surveys by GNSS and total station and 3D scanning are common. Structural and environmental inspection and surveys, monitoring measurements and instrumentation, 3D data capture by UAS photogrammetry and LiDAR may also be needed.

Deliverables include topographic survey plans, 3D data sets and point clouds, 3D models and meshes, BIM/REVIT models, utility surveys, detailed measured plans elevations and cross-sections, along with detailed inspection imagery provide a comprehensive picture of existing assets.

By employing these methods, we can effectively evaluate an existing structure's potential, facilitating informed decisions about its future and paving the way for a sustainable and responsible approach to construction.



Elios Remote Inspection Point cloud capture (.RCP/.LAS)

TEXO TALK

FOUNDATION

Dean Sutherland Returns to the Ring in “Battle at the Ballroom 2”

Get ready for another action-packed night! Aberdeen's own Dean Sutherland, proudly sponsored by TEXO, is back in the ring on May 11th for “Battle at the Ballroom 2” at the Aberdeen Beach Ballroom. Don't miss this chance to see Dean as he continues his climb up the British rankings!



Tommy “Hitman” Hodgson Aims for Northern Area Title on May 4th!

Get ready for a knockout night! TEXO-sponsored Tommy “Hitman” Hodgson steps back into the ring on May 4th at Rainton Meadows Arena, setting his sights on claiming the coveted Northern Area title. Don't miss your chance to witness this rising star in action!



TEXO TALK

The Archie Foundation's Marathon March

This month, Team TEXO has been participating in *The Archie Foundation's Marathon March*. Throughout the month, we've been moving a mile every day to fundraise for the children's charity, who are dedicated to providing support, care, and resources to improve the wellbeing and outcomes of young patients and their families.

Thanks to everyone's support, we've raised more than £1,000 for The Archie Foundation! There are still a few days left to donate, so if you would like to, the link is below:

justgiving.com/page/teamtexomarathonmarch

As we approach the end of Marathon March, we'd like to say a HUGE thank you to everyone who has donated or participated in this challenge! For those who have been participating, don't forget to send your photos of Archie on his travels into the Teams channel by Monday. If you'd like to take a mascot out for a final walk, these are still available to collect at reception areas. Let's make this last push count!



A NEW INITIATIVE FROM TEXO

CHALLENGE

TEXO



*SCAN & HELP
YOUR COMMUNITY!*

OR CLICK [HERE](#)

ONE CITY • ONE COMMUNITY • ONE CLUB
TOGETHER WE ARE **ONE**

TEXO

TEXO.CO.UK

TEXO TEAM PLAYER OF THE MONTH



IN THE FIELD

Liam Matheson

Project Manager
Engineering & Fabrication

Liam Matheson is TEXO Engineering and Fabrications team player of the month.

Liam has been TEXO Engineering and Fabrications onsite Project Manager in Dundee since December 2023, working on critical shipyard scopes of work involving replacing Jack Up rigs damaged hull steelwork ascertained during operations, he managed a team to execute this work safely on time and on budget. During this time Liam and his team took on a second Jack Up project with multiple scopes of work involved with a tight schedule and a high focus on delivering.

Liam has consistently demonstrated great qualities as a Project Manager, embodying the values of collaboration, teamwork, and commitment to project success making him a deserving recipient of the "Team Player of the Month" award.



OFFICE BASED

Gracie Buchanan

Environmental & Sustainability
Coordinator

Gracie joined us to help us with our transition towards net zero and has exceeded all expectations. She has helped enormously with the research and with calculation of our baseline year emissions and in a short time has developed a comprehensive measurement process. TEXO's first Net Zero Report and supplementary Roadmap to Net Zero is set to be published early this year and it has not come without its challenges which Gracie has overcome with grace [pun intended] and a high degree of professionalism.

Going above and beyond, Gracie has not only guided us on our net zero journey but also orchestrated charity events, been an integral part of planning employee engagement initiatives, and played a pivotal role in strategic planning to further reduce emissions at a Group level.

Gracie joined us as a graduate following completion of her Master's degree in Sustainability Transitions, and now sets off on her next adventure as she travels through central America, then South-East Asia, then off to Australia. We will truly miss her when she is gone, and it will feel as though a limb is missing. Please come back Gracie!

TEXO TALK

MARCH



TEXO TUNED IN

TEXO Tuned In is a series of conversations with key people in the Engineering, Fabrication, Construction and Surveying industries to discuss innovation and points of consideration for the changing landscape of these fields.



Podcast Episode 15: Phil Lishman

Head of Engineering & Capital Delivery
Teesside International Airport

ACS TEXO's work on the airport's Cargo Handling Facility for handling freight of all shapes and sizes



<https://open.spotify.com/episode/3lX5amUIAvFmiFa1pSywGV?si=970000ac3b434999>



<https://youtu.be/ZFLg60jIC9c?si=x0Zybb4l-Z0LgH0k>



<https://texo.co.uk/podcast/podcast-episode15-/>



Podcast Episode 14: Dean Sutherland

Professional Boxer Supported
By The Texo Foundation

The journey to professional boxing stardom and The Texo Foundation's role in supporting Dean to achieve his success.



<https://open.spotify.com/episode/DWIIKdbiwfTAnJozMtaSz2?si=db431d0807f845ac>



https://youtu.be/S4Elb0wFu_U?si=zvU0bXt-H0VhRzLx



<https://texo.co.uk/podcast/podcast-episode14-/>



Podcast Episode 13: Gary McDonald

Business Development Manager
TEXO Group

The process of selling and communicating the work of a company with 8 distinct services.



<https://open.spotify.com/episode/7HDRkv5XWBVxWLdZzRYBLc?si=a4829e178eaf4d5b>



<https://www.youtube.com/watch?v=7a9vsKCrkaU>



<https://texo.co.uk/podcast/podcast-episode13-/>

TEXO TALK

MARCH



March Results

St. Mirren **2 - 1** Aberdeen
Cinch Premiership
02 Mar, The SMISA Stadium

Aberdeen **3 - 1** Kilmarnock FC
Scottish FA Cup
09 Feb, Pittodrie Stadium

Dundee **1 - 0** Aberdeen
Cinch Premiership
13 Mar, Kilmac Stadium at Dens Park

Motherwell **0 - 1** Aberdeen
Cinch Premiership
16 Mar, Fir Park

Aberdeen **2 - 1** Ross County
Cinch Premiership
30 Mar, Pittodrie Stadium



TEXO TALK

MARCH



March Results

Tamworth **3 - 1** Blyth Spartans
NLN Sat 02 Mar

Blyth Spartans **1 - 1** Newcastle Benfield
NSC Mon 04 Mar

Blyth Spartans **0 - 1** King's Lynn Town
NLN Sat 09 Mar

Blyth Spartans **1 - 2** Darlington
NLN Tue 12 Mar

Southport **2 - 3** Blyth Spartans
NLN Sat 16 Mar

Blyth Spartans **3 - 2** Buxton
NLN Tue 19 Mar

Peterborough Sports **2 - 2** Blyth Spartans
NLN Sat 23 Mar

Blyth Spartans **2 - 3** Curzon Ashton
NLN Fri 29 Mar



TEXO TALK

MARCH



March Results

Enfield **5 - 1** Witham Town
Isthmian North, Wed 6 Mar

Stowmarket Town **1 - 1** Witham Town
Isthmian North, Tue 26 Mar

Witham Town **0 - 2** Bury Town
Isthmian North, Sat 9 Mar

Witham Town **3 - 0** Walthamstow
Isthmian North, Sat 30 Mar

Witham Town **2 - 4** Bowers & Pitsea
Isthmian North, Sat 16 Mar



March Results

Crombie Park **4 - 1** Sunnybank FC
NRJFA Premier League, 02 Mar 2024

Aberdeen East End **0 - 1** Sunnybank FC
NRJFA Premier League, 16 Mar 2024

Sunnybank FC **2 - 0** Colony Park
NRJFA Premier League, 09 Mar 2024

Sunnybank FC **2 - 2** Newmachar Utd
NRJFA Premier League, 23 Mar 2024

