



TEXO TALK

FEBRUARY 2021



Introducing

TEXO Recruitment

It makes complete sense for us to have a recruitment service as part of our mix. Not only does it help us to recruit the best in the business across all our disciplines – engineering, fabrication, asset management, survey and port specialisms – but it allows us to have a presence in the wider market, matching clients' requirements with great candidates.



TEXO Recruitment specialises in the construction, engineering, oil and gas and finance sectors, and its growing consultant team has significant experience across these sectors, with a great network of contacts and an in-depth understanding of what's most important to businesses and candidates in these areas.

Both candidates and clients have already given some fantastic feedback about working with TEXO Recruitment, including: *"I've been looking for a new role for a few months now and your response is the most direct and personal response I've received in that time and I commend you for that."*



New website launching 1st March!
www.recruitment.texo.co.uk





The best thing about TEXO Recruitment is that we are independent. That means that we are flexible and agile, able to adapt our services to clients' needs and giving them a personal service. That sets us apart from most of the competition in our sectors, which are mostly big, cumbersome national agencies that often concentrate on quantity rather than quality."

We're a relatively new entrant to the market, we already have some great consultants on board, and are launching a dedicated TEXO Recruitment website next month. Our plan is to hire more consultants during 2021, doubling our size by the end of the year, and establishing satellite offices in the areas where TEXO service companies are based to ensure we can provide a wider offering. We've had some fantastic feedback already from both clients and candidates and I believe that our contacts, professionalism and ways of working will attract a wide range of business over the coming months."



Debra Bruce
Managing Director



TEXO News

Announcing the TEXO Foundation

We're really delighted to be launching the TEXO Foundation – our own charity foundation that will allow us to support local and national charities all year round.

We've done this because we know you all have charities that are close to your heart, and we want to support you in raising money for those charities, helping us all to give back to people and places who need it the most.

At Christmas, we supported The Archie Foundation's Christmas Tree scheme, which was absolutely fantastic, and we'll be continuing to support this charity through the foundation. Currently, money raised for The Archie Foundation is helping to provide specialist staff, equipment, toys, facilities for parents and essential training to support children's healthcare experiences across Grampian and North East Scotland. Archie's also supports the Grampian Child Bereavement Network and the Aberdeen Neonatal unit.

We'll be adding charities to the TEXO Foundation in the near future, and talking to you about the charities that you most want to support. We'll also be looking at the best ways to fundraise, particularly when Covid restrictions might be limiting the traditional company fundraising events that we'd do. We're also interested in hearing how you might like to give back in other ways – with volunteering or organising specific events, for example.

TEXO Engineering & Fabrication

Case Study: A collaborative approach to tank upgrades

Our client asked us to look at tank repair and maintenance in order to ensure that their tanks were compliant with the Engineering Equipment and Materials User Association regulations.

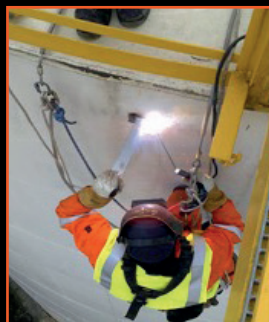
THE SOLUTION

We began by using our 3D scanning expertise to capture all survey data, allowing our engineering department to design access to the tanks and the processes for running a variety of relevant checks. This survey data was put into AutoCAD 3D, STAAD.PRO and Recap to give accurate plans.

In order to make the repairs, we needed both rope access and crane lift equipment, so that there was no need for expensive and potentially dangerous scaffolding. Our team used its welding and fabrication expertise to manage the maintenance, repairs, pipefitting and MPI inspection. We also erected a modular office at short notice, to allow a site office for our team at the site.

THE RESULT

Working across several of our services areas, this project was a true collaboration, demonstrating both our turnkey project solutions and quick response to site needs. We successfully completed the projects within very short timescales and during poor weather.



TEXO Team Player Of The Month



Craig Godbold

TEXO Land & Aerial Surveys
Survey & Inspection Manager

Craig from the onset has shown drive and determination, he has been vital for the current success of the SSE contract and for that I have to express my sincere thanks. His keen eye for detail, proactiveness and willingness to learn are attributes that I hope inspires all new and existing employees, he will be a great role model and mentor as TEXO expands to new heights.



I must say, it is clearly evident that Craig is ex-forces albeit RAF. He is a very conscientious worker who just seems to “get it”. I am particularly impressed that he is willing to learn all about the Overhead Line aspect of the works and he often calls me or messages me for an explanation as to why certain fittings or conditions that have been captured on footage are as they are.

In reality there is no requirement for Craig to understand how things actually happen but he is clearly keen to learn. I think when he is back then at least you have a trustworthy employee who you can send North as and when required if you aren't available. If you manage to get a two teams made up of guys like that then this contract will be a very good earner for TEXO, however that's easier said than done as individuals like him are few and far between.”

– Ewen Christie, ECOS Solutions



WORKSPACE
SOLUTIONS



ENGINEERING
& FABRICATION



ASSET
INTEGRITY

TEXO

TOGETHER WE ARE ONE



RECRUITMENT



LAND & AERIAL
SURVEYS



PORT
SERVICES