



TEXO TALK

MARCH 2021



Introducing

TEXO Engineering & Fabrication

We are an established and credible brownfield EPC contractor, with expertise across multiple disciplines including design, engineering, project management and consultancy services. We also have a comprehensive construction capability that supports project of all shapes and sizes.

We are part of a collaborative group – a family of experienced engineers, project managers, fabricators and support staff which is dedicated to health and safety, quality, new and existing customer relationships and delivering cost effective concepts and solutions. Our work is designed to benefit every element of the projects we work on, to ensure success at every stage of the project lifecycle.

Our services cover all aspects of the project lifecycle from feasibility studies and FEED stages to planning, detailed design and engineering to construction installation and commissioning both onshore and offshore.

Our unique technology-driven approach to managing projects for clients across the entire spectrum of upstream, downstream and process puts us in an enviable position as a best-in-class provider. We provide engineering, technology and personnel services across the life cycle of Oil & Gas assets. Our depth of offering is expansive ranging from front-end engineering through to fabrication, inspection, repair and maintenance services.

Specialists in:

- Onshore and offshore construction both in the UK and overseas
- Inspection and asset condition evaluation
- Asset refurbishment, reactivations and modifications
- Rig repair and modification service
- Shutdown management and support
- Supply of ad-hoc multi-discipline trades personnel
- Secondment of construction management personnel and teams



TEXO News

TEXO Engineering & Fabrication received an enquiry at the end of January 2021 to tender for a large fabrication project for a well known client within the renewables sector to aid a wind farm based in Scottish waters.

After multiple scenarios to the scope of work for the delivery of the overall project, TEXO's best and final offer was submitted at the end of February. Due to the size of the project, TEXO chose to utilise its great facility options and extend the fabrication project in the Port of Blyth –where TEXO Port Services is based – in order to meet delivery expectations.

TEXO were thrilled to be successfully awarded the multi-million pound contract on 12th March 2021, thanks to all the hard work and effort of the team involved within the tender process.

One of the major challenges on this project is the scheduled dates for delivery. As soon the purchase order was in place, the hard work has not stopped. A project team was put in place at short notice, material purchased in a market where steel availability and price is as volatile as it been for some time, and all front-end documentation was to be in place for client review to allow us to keep to this challenging and tight schedule.

Due to the complex nature of this project and the multi-disciplinary approach of TEXO, we are benefitting from collaboration throughout the business – the project teams are based in Dundee (TEXO Fabrication) and Blyth (TEXO Port Services); TEXO Recruitment are assisting in sourcing additional workforce; and TEXO Workspace Solutions are putting the project offices and welfare units in place to allow us to adhere to the COVID-19 government guidelines.



TEXO Engineering & Fabrication

Case Study: Tolmount Platform Interface

TEXO Engineering and Fabrication was contracted to carry out the design, construction and installation of this platform interface. The project also required us to carry out a detailed survey ahead of engineering design.

THE SOLUTION

We used our expertise in survey scanning and engineering design to focus on a quick assembly offshore, minimising the risk of dropped objects, and reducing the interaction of personnel during assembly. All the units were designed to drop into place and be immediately supported and secured. We also ensured that the design was flexible in relation to the fixing point between the rig and the platform.

Working between our divisions, we devised various rigging and lifting plans, choosing to forgo scaffolding and use rope access instead. We were looking for the most efficient, safest way to install the units whilst keeping the project efficient at all times.

THE RESULT

Despite significant changes in design parameters, resulting in a tower redesign during the project, we achieved project finish without any significant delays.

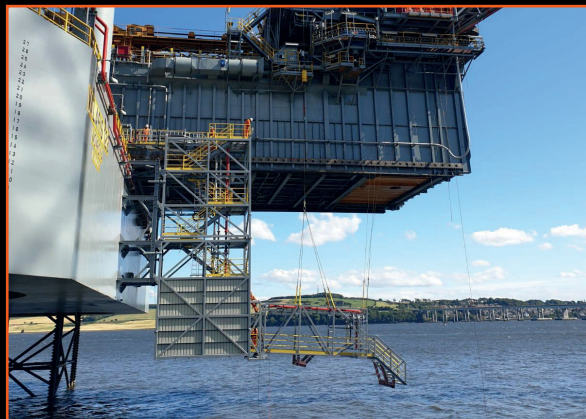
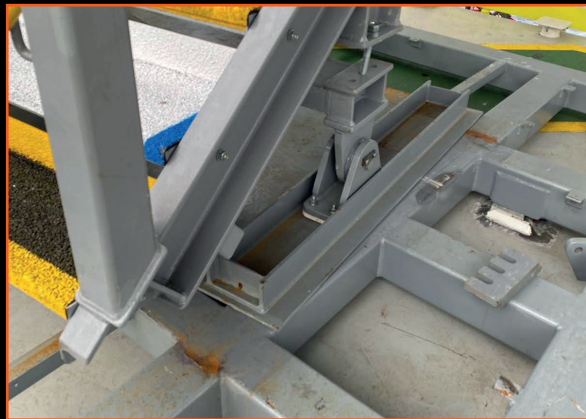
We also had to overcome issues related to the pandemic, needing to mobilise and demobilise several times in the shipyard period because of delays in getting the right materials. By maintaining open communication channels with our client, and having the flexibility at our fabrication facilities in Dundee and Blyth allowed us to work with these challenges head on, and deliver the project successfully.





Liam has been the driving force behind Premier Oil's Tolmount platform interface project on the Valaris 123. As the Construction Supervisor he has successfully managed a multitude of work scopes and demonstrated exemplary safety leadership throughout the project when leading toolbox talks, making appropriate interventions and driving continuous improvement. He has worked closely with the client and drilling contractor to understand the key offshore challenges and he has often developed cost efficient solutions to optimize operations and reduce HSE risks. Liam has been a significant asset on the Valaris 123 due mainly to his driven proactive attitude and excellent technical knowledge. In addition, his contributions have helped to deliver the correct levels of preparedness for executing Premier Oil's forthcoming Tolmount project when the rig sets sail from Dundee and interfaces with the platform for the first time."

– **Bryce McMillan**, Senior Drilling Supervisor,
Premier Oil



TEXO Team Player Of The Month



**Aaron
Anderson**

TEXO Port Services
Operations Supervisor

Aaron has yet again proved himself to be reliable and dedicated; he is someone who will always apply additional effort and commitment to get the job done.

Aaron has shown his vast fabrication knowledge and with this he also has great life experience, being on the front line build on and offshore and has brought that into all Port services projects so far. Aaron has shown great dedication not only on the back deck of the vessels at the Port but also away from the Port of Blyth at Rosyth and Port of Tyne which the clients have all praised.

Aaron's leadership and direction during the Rosyth Robyn S barge Mob, and significantly in the closing stages, saw the timely completion of the project under an exceptionally tight time frame. He always goes beyond the call of duty by continually seeking out and following through with additional responsibilities he showed this many times recently supporting the J Lay tower final build and loadout.



Harlyn worked alongside TEXO for the load out of the 120 man accommodation unit onto the Robyn S. Aaron was responsible for all the site management of the TEXO team. With Aaron nothing is ever a problem, only solutions. In the world of mobilisation and barge projects, flexibility is the key to getting the project delivered as there are always unplanned works and equipment. One example is Aaron coming back to the site 5 hours after the shift to perform small modifications. This flexibility and drive to deliver for the customers is what is great about working with Aaron.

We have enjoyed working with Aaron on this project and many of the others we have worked on together, and all at Harlyn are looking forward to the next collaboration working with Aaron and the wider TEXO team.

– **Hamish Adamson**, Managing Director
Harlyn Solutions

